




A Craft of New Age Living



Imagine exploring your **'Own World'** less travelled.

Envision a perfect blend of science, nature and innovation as a part of your daily life.

To create an ambience of finest environs.

Crafted with great deliberations.

From the creators who know the best.

**Yes, we are talking about a finest Abode of Your Life.**





## 2 and 3 BHK Signature Residences

for those who understand the significance of new-age living.

To offer you the complete spectrum of living, carefully designed spaces, soothing ambiance, use of green technology - each apartment with a spirit of its own, all of which will transform your life to the epitome of perfection. Designed by the masters of the craft.



Welcome to Home Wood, Your finest destination of New-Age Life.

Presented by **Kawade Patil Developers** who believe in crafting a real life portraits than constructing simple residential complexes.





**homewood**  
37 Kondhwa

A craft of New-Age living

## Amenities

### Recreational

- Club House
- Gymnasium
- Exclusive Landscape Garden
- Children's Play Area With Sand Pit
- Jogging Track
- Amphitheater
- Large Open Spaces
- Senior Citizen Sitting Area
- Roller Skating Track
- Party Lawn
- Gazebo
- Water Feature

### Security

- CCTV Vigilance
- Intercom Facility
- Video Door Phone Connected to Main Gate
- Fire Fighting System
- Security Cabin At Main Gate
- (Wi-Fi) Facility

### Campus

- Vermiculture Pits
- Solar Water heating
- Rainwater Harvesting
- Decorative Entrance Gate
- Attractive Entrance Lobby
- Power Back Up for Common Areas
- Water Storage Capacity 60000 Lit
- Bore well Water for Garden and Emergency Household use
- Ample Parking Area
- Toilet at Parking Level for Security and Guest
- Fully Automatic Lifts
- Extra MSEDCL Meter for Common Areas
- One Year Defect Liability Period





homewood  
37 Kondhwa  
A craft of New-Age living



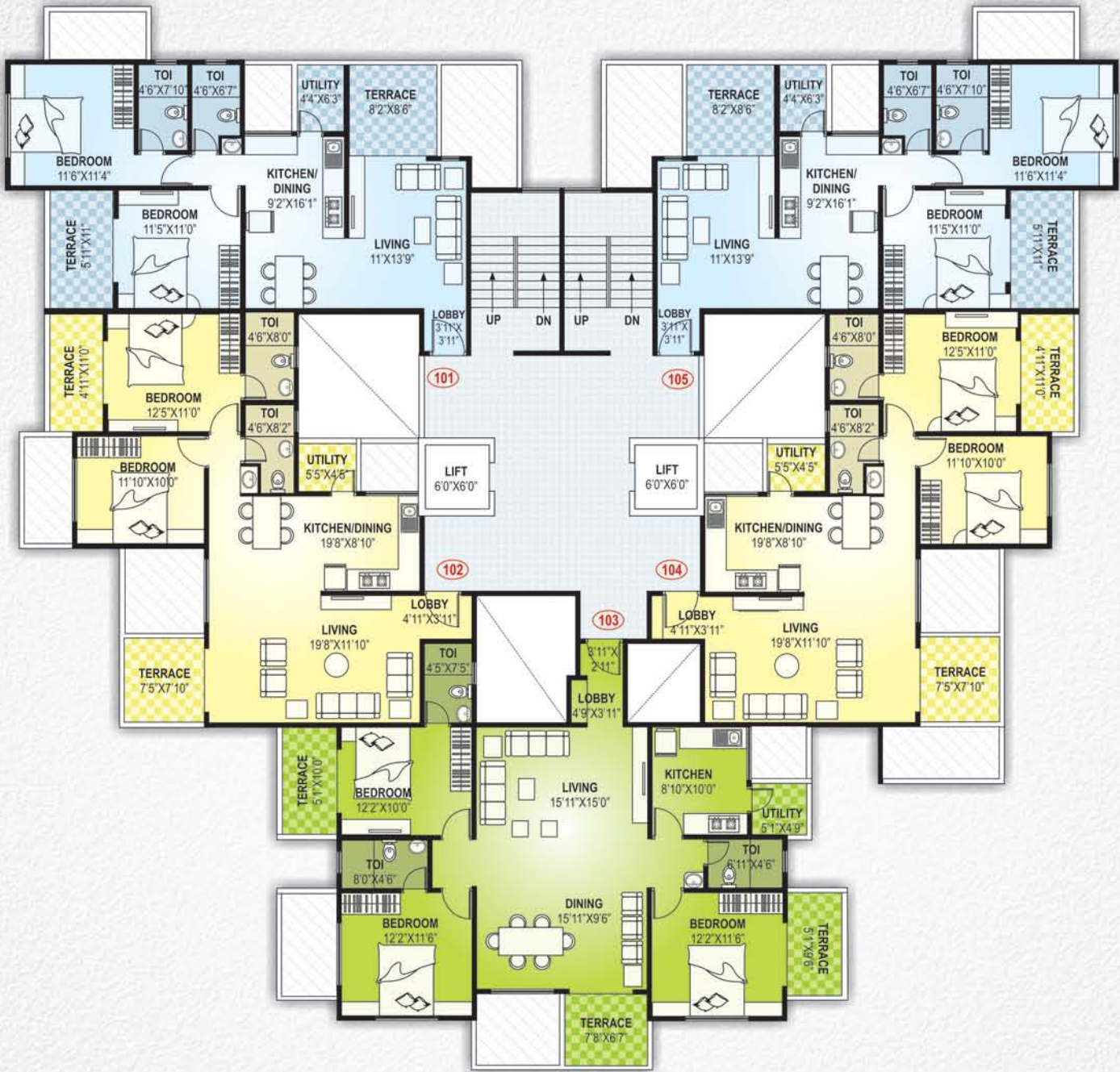
3 BHK Apartments



2 BHK Apartments



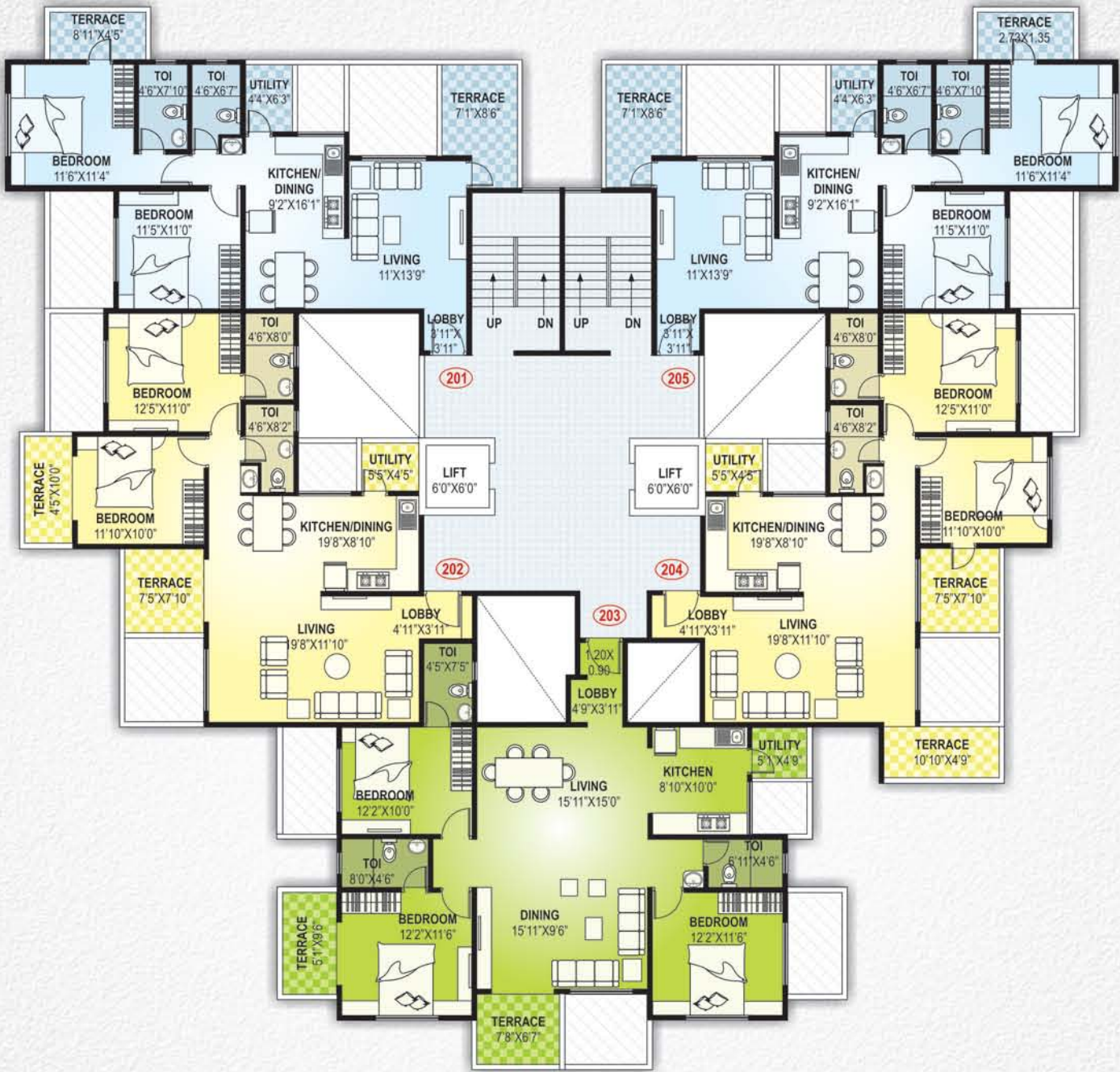
1<sup>st</sup> 3<sup>rd</sup> 5<sup>th</sup> 7<sup>th</sup> 9<sup>th</sup> 11<sup>th</sup> Floor Plan



SALEABLE AREA

Flat No	Carpet Area	TER-1	TER-2	TER-3	TER-4	Aq.Mts.	Sq.Ft.
101	63.87	6.50	6.03	2.52		98.08	1055.74
102	73.32	5.40	5.02	2.21		107.95	1161.93
103	99.90	4.70	4.73	2.25	4.50	146.05	1572.08
104	73.32	5.40	5.02	2.21		107.95	1161.93
105	63.87	6.50	6.03	2.52		98.08	1055.74

2<sup>nd</sup> 4<sup>th</sup> 6<sup>th</sup> 8<sup>th</sup> 10<sup>th</sup> Floor Plan



SALEABLE AREA

Flat No	Carpet Area	TER-1	TER-2	TER-3	TER-4	SALEABLE
201	63.56	6.76	3.68	2.52	95.59	1028.91
202	73.30	5.40	4.12	2.21	107.02	1151.96
203	99.78	4.70	4.50	2.25	141.16	1519.49
204	73.02	4.78	5.40	2.21	107.32	1155.15
505	63.83	6.76	3.68	2.52	95.59	1028.91





## Specifications

### Structural

- R C C Framed Structure
- Earth Quake Resistant Structure
- External & Internal Wall 150 mm thick
- Internal POP Finish Plastering
- External Sand Face Plastering with Texture Effect

### Living / Dining

- Branded Vitrified Tile Flooring of Size 2' X 2'
- Painting in oil Bound Distemper for Walls and Ceiling

### Bedrooms

- Branded Vitrified Tile Flooring of Size 2' X 2'
- Painting in oil Bound Distemper for Walls and Ceiling
- Split AC Provision in Living and Master Bedroom

### Kitchen

- Branded Vitrified Tile Flooring of Size 2' X 2'
- Painting in oil Bound Distemper for Walls and Ceiling
- Dado Tiles up to Lintel level

### Doors / Windows

- Designer Door at Entrance
- Internal Solid Core Flush Doors
- Powder coated Aluminum Sliding Window
- M S grill to all External Windows
- Window Sill in Granite
- M S Door for Terrace Opening

### Toilets

- Designer Tiles up to 7' Height
- Granite door frame with Waterproof flush door
- Provision for Boiler above false ceiling
- Parryware Sanitaryware
- Jaquar sanitary fittings
- Internal GI concealed plumbing
- Anti skid Ceramic tile flooring
- Vanity Counter

### Electrical

- Concealed Electrical Wiring
- Legrand or Equivalent Electrical Switches
- Finolex or Polycab Electrical Wires
- Provision for Boiler and AC
- Power Backup for common areas

### Common Areas

- Decorative Entrance Lobby
- Staircase treads in Marble/Granite
- Brick Bat Waterproofing
- External Emulsion Ace Paint from Outside





## Project Layout

Visitors Parking

Residential Complex

Senior Citizens  
Sitting Area

Roller Skating Track

Podium Garden

Amphitheater

Children's Play Area  
With Sand Pit

Jogging Track

Water Feature

Party Lawn

Club House

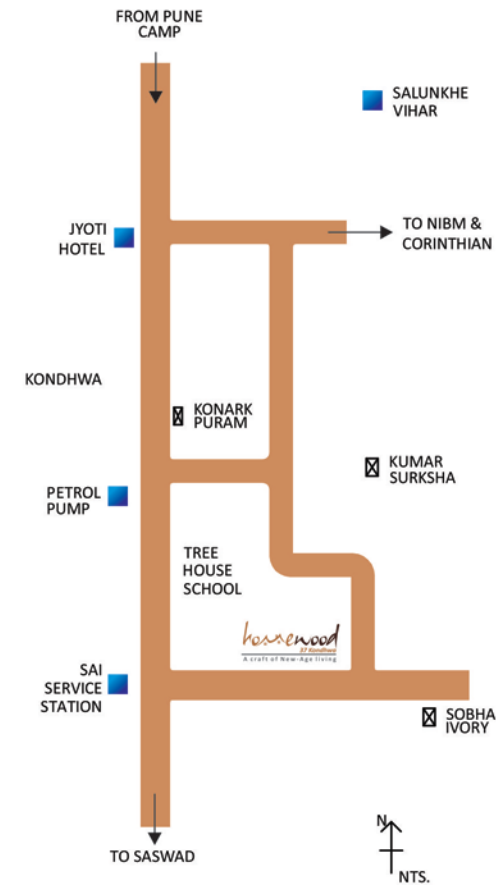
Entrance Gate



*homewood*  
37 Kondhwa  
A craft of New-Age living



## Location Map



## Connectivity

- M G road about 8 km or 10 -15 min. drive
- Market Places like Saluke Vihar, Wanoire, Kondhava, Fatima Nagar, Salisbary Park, Lulla Nagar Market Yard are at short distance
- All major Clubs and Malls in close Vicinity
- Bishops, St Mary's, Hutchings, Delhi Public School, Vibgyor, Mount Carmel, Trinity, Sinhagad Institute, City International Schools etc. are at a short distance.
- Hospitals like Ruby Hall, Inamdar, Military Hospital, Apollo, Sahyadri etc. are at emergency reachable distance.
- Magarpatta, Kharadi, Info City IT PARK are easily accessible in short time

**Site Address:** Homewood, Sarvey No. 37, Parge Nagar, Off NIBM Kondhwa, Pune - 411048.

A Joint venture between



607, The Pentagon, Off Pune Satara Road, Near Hotel Panchami, Parvati, Pune - 411 009.

Cell : **7774077728 / 982 227 6169**, Tel: **020 2421 7805** E-mail: [sales@kawadepatildevelopers.com](mailto:sales@kawadepatildevelopers.com) Web: [www.kawadepatildevelopers.com](http://www.kawadepatildevelopers.com)

This brochure is conceptual and not a legal offering the developer reserves rights to modify or change any plan, layout, colour scheme or any other design.